

THERMOGRAM BALTIMORE CHAPTER



Volume XLVI Issue 5

January 2012

www.ashrae-balto.org

Thursday January 5 2012: Future Trends in Buildings

Thank you to our networking sponsor for the evening: Advanced Thermal Solutions



Main Presentation: Future Trends in Building and Energy Simulation

The buildings industry faces many challenges and opportunities over the next few decades. The buildings touted today as 'most energy-efficient' or 'green' would not be possible without energy simulation but no single simulation tool can model all aspects of our buildings today. Over the next ten years, changes in building technology particularly wireless controls and solid-state lighting will profoundly alter how our buildings are designed, built, and operated. This presentation provides an overview of trends and drivers affecting the building industry as well as the simulation tools of tomorrow.

Speaker: Dr. Drury Crawley

Dr. Crawley leads the U.S. Department of Energy's Building Technologies Program team working to achieve cost-effective net-zero energy commercial buildings by 2025. He is also responsible for managing the DOE's building energy software tools development activities including EnergyPlus (winner of an R&D 100 Award in 2003), Energy Design Plugin for Google SketchUp, Energy-10, DOE-2, and SPARK, among others.

With more than 30 years of experience in buildings energy efficiency, renewable energy, and sustainability, he has worked in government research and standards development organizations, as well as building design and consulting companies. A registered architect, he recently completed his PhD in Mechanical Engineering on the topic of building simulation as a policy tool at the University of Strathclyde in Glasgow, Scotland.

He is active in ASHRAE (Chair of Technical Committee 2.8 Building Environmental Impacts and Sustainability, Chair of Standard 169 Weather Data for Building Design Standards, member of SSPC 189.1P Standard for the Design of High-Performance, Green Buildings Except Low-Rise Residential Buildings, former member of the Research Administration Committee, and former chair of TC 4.2, 4.7, and 7.1). He was made an ASHRAE Fellow in 2009, received an ASHRAE Distinguished Service award in 2003 and a 1999 Symposium Best Paper Award for "Which Weather Data Should You Use for Energy Simulations of Commercial Buildings?"

He is also active in AIA, IBPSA, USGBC (member of the Research Committee and former member of the Energy & Atmosphere TAG), and serves on the editorial boards of three international Journals. He has written more than 100 papers and articles and made more than 300 presentations on energy efficiency, sustainability, and renewable energy topics throughout the world.

Technical Session 5:30-6:15 PM : Concrete Fastening system – What the IBC Code Requires – Law or not

The technical session will discuss the current code requirement and testing procedures for concrete fastening systems. The presentation will also provide a look at what technology is available today.

Speaker: Mr. Chris Hermann

Branch Manager Powers Fasteners for the Baltimore, Central PA region. Chris has many years of experience in the fastener industry and brings a wealth of knowledge in understanding the issues the industry faces today.

**The January meeting will take place at the Engineers Club.
11 West Mount Vernon Place Baltimore, MD 21201**

ASHRAE
Advancing HVAC&R to serve humanity
and promote a sustainable world





2011 Chapter Leadership Roster

Officers

President P:410-254-5800	Cory Colassard F:410-254-7091	Spears Votta and Associates president@ashrae-balto.org
President –Elect P:410-792-4230	Rich Goins F:301-490-7156	Cummins-Wagner vp@ashrae-balto.org
Treasurer P:410-579-8100	Mike Lamdin F:410-540-9041	Leach Wallace Associates treasurer@ashrae-balto.org
Secretary P:410-645-1552	Dave Lawson F:410-645-1616	Siemens Bldg Technologies secretary@ashrae-balto.org
Board Member P:410-265-6100	Adam Fauer F:410-298-9820	James Posey Associates, Inc. asstsecretary@ashrae-balto.org
Board Member P:410-356-3108	Dave Reese F:410-356-3109	Tourgee and Associates gov2@ashrae-balto.org
Board Member P:410-296-6500	Steve Trageser F:410-296-6501	Henry Adams senioradvisor@ashrae-balto.org
Past-President P:410-403-2200	Jason Kaduk F:410-403-2225	The Trane Company pastpresident@ashrae-balto.org

Committee Chairs

Attendance/Recpt. P:443-561-1658	James Cote F:443-561-1604	Chesapeake Systems reservations@ashrae-balto.org
Chapter Programs P:410-792-4230	Rich Goins F:301-490-7156	Cummins-Wagner vp@ashrae-balto.org
Historian P:443-478-6008	Max Singer F:410-527-2730	Johnson Controls, Inc. historian@ashrae-balto.org
Membership P:410-880-0850	Brad Watkins F:301-490-7156	Cummins-Wagner Co. membership@ashrae-balto.org
Refrigeration P:410-403-2200	Jon Olmstead F:410-403-2225	The Trane Company refrigeration@ashrae-balto.org
Research Promotion P:410-254-5800	Alexander Clark F:410-254-7091	Spears/Votta & Assoc. Inc research@ashrae-balto.org
Scholarship P:410-527-2634	John Baker F:410-472-4928	Johnson Controls, Inc. scholarship@ashrae-balto.org
Student Activities P:410-579-8100	Craig Parks F: 410-540-9041	Leach Wallace Associates studentacts@ashrae-balto.org
Student Chapters P:410-579-8100	Matt Brewster F:410-540-9041	Leach Wallace Associates studentchaps@ashrae-balto.org
TAAEE P:410-265-6100	Adam Sontag F:410-298-9820	James Posey Associates, Inc. taaee@ashrae-balto.org
Thermogram P:410-316-2463	Pat Harrilal F:410-472-0958	Johnson, Mirmiran & Thompston newsletter@ashrae-balto.org
Web Technician P:410-579-8100	Dave Brackett F:410-540-9041	Leach Wallace Associates ashtech@ashrae-balto.org
Christmas Party P:410-527-2612	John Prusak F:410-472-4928	Johnson Controls, Inc. Christmas@ashrae-balto.org
Spring Event P:443-977-9741	Sherry Abbott-Adkins F:410-374-5471	A Squared Plus Engineering Support Group, LLC springevent@ashrae-balto.org
Golf Outing P:443-561-1600	R L Gladden F:443-561-1601	Chesapeake Systems golf@ashrae-balto.org
Engineers Week P:410-646-5747	Craig Parks F:410-540-9041	Leach Wallace Associates engweek@ashrae-balto.org
YEA P:410-880-0850	Brad Watkins F:301-490-7156	Cummins-Wagner Co. yeac@ashrae-balto.org
CRC P:443-561-1600	Tyler Lee F:443-561-1601	Chesapeake Systems crc@ashrae-balto.org
Chapter Tech Xfer P:410-792-4230	Richard Goins F:301-490-7156	Cummins-Wagner cttc@ashrae-balto.org

In alignment with the “Green Trends” of ASHRAE we have eliminated the paper copies of the Membership Roster. An electronic copy will be available at meetings, upon request.



President's Pen



By the time this issue of the Thermogram is delivered, it should be just before Christmas. The Board of the Baltimore Chapter and I would like to wish everyone a Merry Christmas, Happy Holidays and a Happy New Year. We also hope that everyone remains safe through the holiday season and is prepared for the economy to improve next year.

The December meeting was our annual Christmas Party; the 62nd time that this event has taken place. Attendance was down slightly due to the economy but, the event was still very well attended. We also had some special guests from Region III and National this year:

Bill Bahnfleth (Society Treasurer)
Paul E. Pettrilli, P.E. (Region III – ARC)
Gary Debes (Region III – Regional Vice Chair Membership Promotion)

The annual Christmas Party allows the Baltimore Chapter to provide over \$15,000.00 annually in high school and college scholarships to very deserving and qualified applicants. Make sure that you assist the interns in your office in completing and submitting an application. If you have any questions contact John Baker at scholarship@ashrae-balto.org. Applications are due by December 31, 2011.

The next Chapter meeting is January 5, 2012 at the Engineering Society of Baltimore and the topics will be:
Technical Seminar: Anchoring Systems
Main Meeting: Future Trends in Buildings

Make sure to mark your calendar now to attend and broaden your base of knowledge with respect to all aspects of design and construction.

The 1st Annual Rockfish Fishing Tournament occurred on November 11, 2011. It was a cold, windy and rough day but there were a number of hardy participants. Look for Alex Clark's summary of the event in this issue of the Thermogram. Congratulations to Alex Clark and his committee for putting this event together and let's support this event in upcoming years as the event supports Research Promotion.

The Baltimore Chapter Research Promotion goal set by National is \$31,300.00 this year. The Chapter donates approximately 50% of the goal annually. To date the members have donated \$3,760.00. If we all can personally donate a little more to Research Promotion this year the Chapter can provide more for scholarships. We all know that the cost of higher education is continually rising and anything that can be done to offset the cost is worthwhile. If you would like to donate, visit the National ASHRAE website at ashrae.org or contact Alex Clark at research@ashrae-balto.org. When you donate, make sure that you identify your affiliation with the Baltimore Chapter so that that Chapter gets credit against the goal set by National.

The Young Engineers in ASHRAE (YEA) will be holding events on February 16, 2012 and May 17, 2012. These events are for those under 35 years of age; however, all members are welcome to attend and meet the new and younger members and make them feel welcome. There will be a raffle for tickets to the April 20, 2012 Spring Event for those 35 and under. Additional information concerning the events will be included in upcoming issues of the Thermogram. If you would like to participate contact Brad Watkins at yeac@ashrae-balto.org

The Baltimore Chapter will be hosting the Region III Chapters Regional Conference (CRC) in August 2012. This event is an annual event that is rotated between the twelve chapters in our Region. It is our chance to show how involved the members of our Chapter are and to show that we are the best Chapter in the Region. While it may seem like it is a long way in the future, planning the CRC is a major undertaking. Please contact Tyler Lee crc@ashrae-balto.org or any CRC committee member to sponsor the event or see how you can become involved or assist in the planning process. There is a flyer with sponsorship information in this issue of the Thermogram. Let's all work to make the Baltimore CRC the standard for all future CRCs.

There are also announcements for the following included in this edition of the Thermogram, including:

COLLEGE SCHOLARSHIP APPLICATION INFORMATION (Chairman-John Baker scholarship@ashrae-balto.org)

The Baltimore Chapter awards multiple scholarships to college students annually.
The process is simple and painless.

APPLICATION DEADLINE IS DECEMBER 31, 2011

YOUNG ENGINEERS IN ASHRAE (YEA) (Chairman- Brad Watkins yeac@ashrae-balto.org)

Stalking Horse In Federal Hill
FREE ATTENDANCE

FEBRUARY 16, 2012

TA/AEE (FORMERLY TEGA) SUBMISSION INFORMATION (Chairman-Adam Sontag taee@ashrae-balto.org)

This is your opportunity to get recognized for innovative, energy saving projects.
The Baltimore Chapter did not submit a single application last year-WE CAN DO BETTER!!

APPLICATION DEADLINE IS MARCH 12, 2011

SPRING EVENT (Chairman- Sherry Abbott-Adkins specialevents@ashrae-balto.org)

Casino Royale Night
Change of venue-Baltimore Museum of Industry

DATE IS APRIL 20, 2011

2012 CHAPTERS REGIONAL CONFERENCE (CRC) (Chairman- Tyler Lee crc@ashrae-balto.org)

Baltimore Chapter is Host
August 10-11, 2012

Let's all support this CRC and make it the best ever!!

Contact information, reservation forms, applications, etc are all included in this edition of the Thermogram. Contact the appropriate committee chair or contact person or print and complete the forms to participate. Increased participation in the Chapter meetings, and events as well as the various opportunities is a goal of the Board this year. The information will be provided but you have to take it from there. Let's all do our part to continue the great success of our Baltimore Chapter.

The Chapter Leadership Roster is part of each Thermogram. Feel free to contact anyone with comments, questions or concerns. Also, if you are interested in volunteering and providing your support at any level contact any Board member or the Committee chair of your interest. You can also contact us through the Chapter website at www.ashrae-balto.org

Thanks for your support of the Baltimore Chapter! Have a Merry Christmas, a Happy New Year and a great and safe holiday Season. See you next year!!!



ASHRAE

2011-2012

Meeting Schedule

Please mark you calendar with the following dates for the 2011 through 2012 Baltimore Chapter meetings. A complete schedule indicating seminar, technical session and main meeting topics will be published in the coming month's Thermogram and is also available on the chapter website www.ashrae-balto.org.

August 12 & 13	Chapter Regional Conference	Scranton, PA
September 8, 2011	2nd Annual Product Show	ESB
October 6, 2011	Main Meeting: Energy Audits Tech Session: Understanding the Audit Process	ESB
November 3, 2011	Main Meeting: Evolution of Economizer Controls Tech Session: The History of Airside Economizers	ESB
December 2, 2011	Christmas Party	Timonium Fairgrounds
January 5, 2012	Main Meeting: Future Trends in Buildings DL Tech Session: Anchoring Systems	ESB
February 2, 2012	Tour: Refrigeration Systems- Phillips Seafood	Off- Site
March 1, 2012	Main Meeting: Energy efficiency in pumping systems Tech Session: TBA	ESB
April 5, 2012	Main Meeting: Legal pitfalls in Sustainable Designs Tech Session: TBA	ESB
May 3, 2012	Main Meeting: HCFC-22 Phase out and the Next Generation Refrigerants Tech Session: Lessons Learned	ESB
June 8, 2012	55th Annual Golf Outing	Turf Valley CC

Main: Main meeting 6 pm social hour, 7pm dinner & meeting (\$25 Dinner Fee for Full Members, \$10 Dinner Fee For Students)





Attention College Students

Are you currently an engineering student planning a career in the Baltimore Area? Let ASHRAE Baltimore help you with your education!

The Scholarship Committee is accepting applications for the 2011-2012 school year. Applications will be accepted until December 31, 2011, for award during the first quarter of 2012.

Last year, the Baltimore Chapter awarded twelve scholarships ranging from \$250 to \$2,000 to students working towards careers in ASHRAE related fields in the Baltimore Area. It's 2011, and once again, we're looking for the best and brightest students to apply.

For information please contact John Baker at 410-527-2634 or via email at john.j.baker@jci.com.

ASHRAE Society Technology Awards

The deadline for submission for the ASHRAE Chapter/Regional Technology Award applications is March 12 2012.

In the past the Baltimore Chapter has had a number of firms submit applications for some of their projects. Those firm received mention at the regional level and several went on to the National level.

The Board of Governors of the Baltimore Chapter would like encourage as many firms a possible to consider submitting application this year.

We have included a copy of the short application form and would encourage you to contact Adam Sontag of James Posey & Associates for more details.

**ASHRAE****CHAPTER/REGIONAL TECHNOLOGY AWARD APPLICATION SHORT FORM****(Revised June 2011)****INTRODUCTION:**

*This Short Form has been developed to stimulate more participation in chapter and regional competition. **This form is not intended to replace the full Society Technology Award Application form.** Regional winners using the short form will be required to complete the full Technology Award Application form before their applications can be forwarded for Society Competition. (This form does not require extensive narrative, plans or photographs.)*

INSTRUCTIONS:

- A. The individual submitting the Technology Award Application must be a current member of ASHRAE who had a significant role in the design or development of the project.
- B. Complete the "Short Form" and use it as the cover page.
- C. Provide a system schematic/diagram not larger than 11" x 17" in size. In addition, attach a brief narrative (maximum of 2 pages). The narrative should include the gross and net building areas applicable to the project, a description of the major building areas (i.e., operating rooms, laboratories, computer rooms, industrial processes, offices, warehouses) and a brief discussion regarding the following five criteria (if a criterion is not applicable, state accordingly):
 - Energy Efficiency
 - Indoor Air Quality
 - Innovation
 - Operation & Maintenance
 - Cost Effectiveness
 - Environmental Impact
- D. Submit your schematic, brief narrative, and completed form to your Chapter Technology Committee Chapter (CTTC) Chair for judging at the chapter level in accordance with their instructions.
- E. The ASHRAE Technology Award program is intended for built projects. First place winning projects should be eligible for submission to the Society level competition on September 1st of the following Society calendar year. Therefore, a project submitted to a Chapter or Regional competition shall be occupied prior to September 1st of the current Society year in order satisfy the proceeding Society level competition requirement of one full year of occupancy.

First place winners in each category from chapter competition will be submitted by the CTTC Chapter Chair to the CTTC Regional Vice Chair for judging in the Regional Technology Awards competition. At the discretion of the CTTC Regional Vice Chair, this may require completion of the full Society Technology Award Application form if the chapter submission was done on the Short Form Application.

The CTTC Regional Vice Chair will invite first place winners in each category from regional competition to submit them for judging in the Society level Technology Awards competition. The regional winners will be given the opportunity to incorporate new information or otherwise improve their submittal before submitting it to the society level competition (e.g., by addressing comments from regional judges). At the discretion of the judging panels at the chapter and regional competitions, more than one first place winner may be awarded in each category.

For the regional competition, submit the number of copies requested by the Regional CTTC Vice Chair. The CTTC Regional Vice Chair may require entries into the regional competition to be done on the full Society Technology Award Application form. In any case, all submissions to the Society level competition must be done on the full Society Technology Award Application form.

- F. It is highly recommended that each entrant confirm by letter (and retain a copy for record) to the owner that the owner has granted permission to submit this project to competition.

NOTE: ASHRAE Technology Awards are the HVAC&R industry's most prestigious honor for efficient energy use in buildings and environmental system performance. While the awards do not certify responsible charge or professional license status, they do recognize outstanding design innovation and successful implementation.



CHAPTER/REGIONAL TECHNOLOGY AWARD - SHORT FORM

1. Category (Check one and indicate New or Existing, if applicable)

- Commercial Buildings New or Existing
- Institutional Buildings:
- Educational Facilities New or Existing
- Other Institutional New or Existing
- Health Care Facilities New or Existing
- Industrial Facilities or Processes New or Existing
- Public Assembly New or Existing
- Residential (Single and Multi-Family)

2. Name of building or project: _____
 City/State: _____

3. Project Description: _____
 Project Study/Design Period: _____
 Percent Occupancy at time of submission: _____

4. Entrant (ASHRAE member with significant role in project):

- a. Name: _____
Last First Middle
- Membership Number: _____
- Chapter: _____
- Region: _____
- b. Address (including country): _____

City State Zip Country
- c. Telephone: (O) _____ d. Email: _____
- e. Entrant's Role in Project: _____
- f. Member's Role in Project: _____
- g. Member's Signature: _____

5. Engineer of Record: _____

By affixing my signature above, I certify that the information contained in this application is accurate to the best of my knowledge. In addition, I certify that I have discussed this entry with the owner and have received permission from the owner to submit this project to the ASHRAE Technology Awards Competition.



CASINO ROYALE NIGHT



Friday, April 20, 2012

7:30 pm—11:30 pm

Baltimore Museum of Industry

Business Casual Attire

Free Parking, Food, Drinks, Gaming, Entertainment,
Door Prizes, Giveaways

7:30 pm -9:30 pm

Visit the Galleries
(No Food or Drinks in Galleries)

7:30 pm -11:00 pm

Dinner and Dessert

8:00 pm -11:00 pm

Casino

11:00 pm -11:30 pm

Door Prizes and Giveaways

Two opportunities to win (2) two free tickets to
Casino Royale Night at the YEA Meeting on
February 16, 2012



TICKETS \$150 EACH

Includes parking, food, drinks, start-up gaming chips

Transportation Gallery Sponsor.....	\$2,500
<i>(Includes 4 tickets to event; advertisement; recognition in program; signage at event)</i>	
Machine Shop/Oyster Cannery Gallery Sponsor	Sponsored
<i>(Includes 4 tickets to event; advertisement; recognition in program; signage at event)</i>	
Print Gallery Sponsor	\$2,000
<i>(Includes 4 tickets to event; advertisement; recognition in program; signage at event)</i>	
Garment Loft Gallery Sponsor.....	\$2,000
<i>(Includes 4 tickets to event; advertisement; recognition in program; signage at event)</i>	
Premium Bar Sponsor	\$1,500
<i>(Includes 2 tickets to event; advertisement; recognition in program; signage at event.)</i>	
Craps Table Sponsor	\$1,500
<i>(Includes 2 tickets to event; advertisement; recognition in program; signage at event.)</i>	
Roulette Table Sponsor	\$1,200
<i>(Includes 1 ticket to event; advertisement; recognition in program; signage at event.)</i>	
Texas Hold Em Table Sponsor	\$1,200
<i>(Includes 1 ticket to event; advertisement; recognition in program; signage at event.)</i>	
Let It Ride Table Sponsor	\$1,000
<i>(Includes 1 ticket to event; advertisement; recognition in program; signage at event.)</i>	
Blackjack Table Sponsor (3).....	\$1,000
<i>(Includes 1 ticket to event; advertisement; recognition in program; signage at event.)</i>	
DJ Sponsor	\$1,000
<i>(Includes 1 ticket to event; advertisement; recognition in program; signage at event.)</i>	
50/50 Raffle Sponsor.....	\$1,000
<i>(Includes 1 ticket to event; advertisement; recognition in program; signage at event.)</i>	
Ticket Sponsor.....	Sponsored
<i>(Includes 1 ticket to event; advertisement on tickets.)</i>	
Program Sponsor	\$800
<i>(Includes 1 ticket to event; full page advertisement in program.)</i>	
Attendee Gift Sponsor.....	Sponsored
<i>(Includes 1 ticket to event; advertisement on gift; recognition in program.)</i>	
Door Prize Sponsor.....	\$650
<i>(Includes 1 ticket to event; advertisement; recognition in program.)</i>	

Ticket and Sponsor Sales

Contact: Sherry Abbott-Adkins, Phone: 443-977-9741

Email: sadkins@a2esg.com



SPONSOR and TICKET FORM

Please check the box which you would like to Sponsor/Ticket Purchase and return to the email address or mailing address below.

Company/Name: _____
 Address: _____
 Contact: _____
 Phone: _____ Email: _____

Make Checks Payable to: ASHRAE BALTIMORE CHAPTER

Tickets (_____ # of Tickets Requested).....	\$150 per person
Transportation Gallery Sponsor.....	\$2,500
Print Gallery Sponsor	\$2,000
Garment Loft Gallery Sponsor	\$2,000
Premium Bar Sponsor	\$1,500
Craps Table Sponsor	\$1,500
Roulette Table Sponsor	\$1,200
Texas Hold Em Table Sponsor (2 Available)	\$1,200
Let It Ride Table Sponsor	\$1,000
Blackjack Table Sponsor (3 Available, 1 table has been sponsored)	\$1,000
DJ Sponsor	\$1,000
50/50 Raffle Sponsor.....	\$1,000
Program Sponsor	\$800
Door Prize Sponsor.....	\$650

Sponsor and Tickets Sales: Sherry Abbott-Adkins

Email: SADKINS@A2ESG.COM

Address: ASHRAE Baltimore Chapter Spring Event Chair
c/o A Squared Plus Engineering Support Group, LLC
3477 Shiloh Road, Hampstead, Maryland 21074



**BALTIMORE CHAPTER
CHAPTER REGIONAL CONFERENCE (CRC)
ON AUGUST 10-11, 2012**

SPONSOR FORM

**Please check the box which you would like to sponsor
and return to the email address or mailing address below.**

There are 13 local ASHRAE chapters in our region covering Pennsylvania, Delaware, Maryland and Virginia; each year the CRC rotates from chapter to chapter.

CRC will be held at Engineering Society of Baltimore and Peabody Court. Many Technical Sessions, Workshops and Events are currently being planned.

The CRC serves as forum where:

- The chapters report on the activities for the previous year and establish goals for the coming year.
- Society officers inform the region of Society’s plans and review chapter activities within the region.
- Chapter workshops that will educate and prepare officers and committee members to fulfill their responsibilities are conducted.
- Technical Sessions that will educate our members. Great way to get your CEU/PDH!
- Chapters present nominees for Society and regional offices and candidates for honors and awards.

Company/Name: _____
 Address: _____
 Contact: _____
 Phone: _____ Email: _____

Make Checks Payable to: ASHRAE BALTIMORE CHAPTER

- Ravens Sponsor.....\$1,500
(Includes 4 tickets to the Welcome Party; Recognition Board; Recognition on CRC printed materials at the CRC)
- Orioles Sponsor.....\$1,000
(Includes 2 tickets to the Welcome Party; Recognition Board; Recognition on CRC printed materials at the CRC)
- Terrapins Sponsor.....\$500
(Includes Recognition Board; recognition on CRC printed materials at the CRC)
- Retriever Sponsor.....\$250
(Includes Recognition Board; recognition on CRC printed materials at the CRC)
- Blue Crab Sponsor.....\$100
(Includes recognition on CRC printed materials at the CRC)

Sponsor Sales: Sherry Abbott-Adkins

Email: SADKINS@A2ESG.COM

**Address: ASHRAE Baltimore Chapter CRC Sponsor Chair
c/o A Squared Plus Engineering Support Group, LLC
3477 Shiloh Road, Hampstead, Maryland 21074**



dATE: tHURSDAY, FEB 16, 2012
tIME: fROM 6-9PM
pLACE: sTALKING hORSE bAR
IOLOCATION: 26 E. cROSS sTREET
fEDERAL hILL, MD 21230

ASHRAE Happy Hour: Free To All ASHRAE YEA members!
Meet, greet, and have drinks with your fellow YEA members

Open Bar: Domestic bottles, Yuengling and Bud Light Draft, and House Wines
Appetizer Buffet

Event Sponsored By ASHRAE Membership
Please RSVP to Brad Watkins by Feb 1st at: Membership@Ashrae-Balto.org





Cold Climate HVAC 2012

Plan to participate in the 7th International HVAC Cold Climate Conference, November 12-14, 2012 in Calgary, Alberta, Canada. ASHRAE is hosting and organizing the conference with support from REHVA, a co-sponsor, and SCANVAC, the conference originator. A great program and social events are being planned for you!

Erich Binder
Conference President



The planning committee seeks papers featuring innovations in cold climate HVAC design:

- Energy and sustainability
- Building technology for people
- Indoor environment and health
- Challenges for remote areas
- Building envelopes and moisture management
- HVAC system operation and maintenance
- Standards, codes, regulations and requirements

Submit abstracts (350 words or less) online by Jan. 6 2012.
Upon acceptance, papers will be due April 1, 2012.

Tourism Calgary website: www.visitcalgary.com
Tourism Alberta website: www.travelalberta.com

International Scientific Committee

<u>Belgium</u>	Geo Clausen
Peter Wouters	Per Heiselberg
Olli Seppänen	<u>Finland</u>
<u>Canada</u>	Jarek Kunitzky
Bert Phillips, Chair	Jorma Railio
Anil Parekh	Risto Kosonen
Bill Dean	<u>Germany</u>
Bill Semple	Dietrich Schmidt
Boualem Ouazia	<u>Hungary</u>
Carey Simonson	Magyar Zoltan
Fariborz Haghighat	<u>Iceland</u>
Gary Proskiw	Guðni A. Jóhannesson
Iain MacDonald	<u>Japan</u>
Michel Tardif	Hiroshi Yoshino
Peter Chan	<u>Latvia</u>
Robert Bean	Andris Kreslins
Skip Hayden	<u>Norway</u>
<u>China</u>	Sten Hanssen
Xudong Yang	Vojislav Novakovic
Yuguo Li (Hong Kong)	<u>South Korea</u>
<u>Czech Republic</u>	Kwang Woo Kim
Karel Kabele	<u>Sweden</u>
<u>Denmark</u>	Asa Wahlstrom
Bjarne Olesen	<u>USA</u>
Anker Nielsen	Jack Hebert
Bent Michael Nielsen	Jianshun Zhang
Carsten Rode	John Davies

Diamond Sponsor:



Silver Sponsor:



Sponsor:



Bronze Sponsor:



Co-sponsors:



www.ashrae.org/coldclimate

Important dates

Jan. 6, 2012	Abstracts Due
Feb. 1	Acceptance of abstracts
April 1	Papers due
June 15	Review results to authors
July 1	Draft program
Aug. 1	Final manuscripts
Aug. 15	Final acceptance to authors
Sept. 15	Final program



News

AMERICAN SOCIETY OF HEATING, REFRIGERATING AND AIR-CONDITIONING ENGINEERS
1791 Tullie Circle, NE • Atlanta, GA 30329-2305 • 404-636-8400 • www.ashrae.org

For Release:
Dec. 6, 2011

Contact: Amanda Dean
Public Relations
678-539-1216
adean@ashrae.org

Call for Papers Extended for Cold Climate Conference

ATLANTA—The call for papers deadline for the Seventh International HVAC Cold Climate Conference, Nov. 12-14, 2012, in Calgary, Alberta, Canada, has been extended to Jan. 6, 2012.

Cold Climate HVAC 2012, hosted by ASHRAE, will provide key elements of a strategy by which scientists, designers, engineers, manufacturers and other decision makers in cold climate regions can achieve good indoor environmental quality (IEQ), with a minimum use of resources and energy.

“The deadline is being extended to Jan. 6 to foster the submission of a greater number of papers on international innovations in cold climate HVAC design,” Erich Binder, conference president, said.

A predominate number of Canadian papers have been submitted, and the conference’s Scientific Committee of nearly 40 members from 15 countries seeks broader participation, he said.

The range of topics includes energy and sustainability in cold climate environments; building technology for people in cold climates; indoor environment and health; challenges for remote areas; cold climate building envelopes and moisture management; HVAC system operation and maintenance; and cold climate standards, codes, regulations and requirements.



The Scientific Committee seeks papers featuring innovations in cold climate HVAC design. This includes new technologies and applications; improved methodologies, improvements to computational models or other design tools; novel methods of management, organization or quality assurance; and novel avenues of research or revised conceptual frameworks for designers.

Submit abstracts no longer than 350 words, which summarize the objectives, approach, results and conclusions of the proposed paper, and five to seven keywords by Jan. 6, 2012. Upon acceptance, papers will be due April 1, 2012. For specific topics, to submit a conference paper abstract or for more information go to www.ashrae.org/ColdClimate. For additional information, contact meetings@ashrae.org.

The Scandinavian Federation of Heating, Ventilation and Sanitary Engineering Associations (SCANVAC) initiated the series of Cold Climate HVAC Conferences. The six previous conferences have been successfully organized in Rovaniemi, Finland in 1994; Reykjavik, Iceland in 1997; Sapporo, Japan in 2000; Trondheim, Norway in 2003; Moscow, Russia in 2006; and Sisimiut, Greenland in 2009.

The series of congresses have earlier been supported by national HVAC societies, the Federation of European Heating, Ventilation and Air Condition Associations (REHVA) and ASHRAE.

ASHRAE, founded in 1894, is an international organization of some 50,000 persons. ASHRAE fulfills its mission of advancing heating, ventilation, air conditioning and refrigeration to serve humanity and promote a sustainable world through research, standards writing, publishing and continuing education.

###



**ASHRAE Baltimore Chapter
GOLF OUTING & BANQUET**

Friday, June 1, 2012

**TURF VALLEY COUNTRY CLUB
ELLICOTT CITY, MARYLAND**

\$135/PERSON

\$150 FOR HOLE SPONSOR

**\$650 FOR FOURSOME
(including hole sponsor)**



10:00 AM	SHOTGUN START
10:00 AM—5:00 PM	CASH BAR & LUNCH AVAILABLE
3:00 PM—4:00 PM	RECEPTION
4:00 PM—6:00 PM	DINNER
5:00 PM	AWARDS & PRIZES

Golf & Dinner Reservations:

**R.L. GLADDEN
CHESAPEAKE SYSTEMS
TEL: 443.561.1600
GOLF@ASHRAE-BALTO.ORG**

MAKE CHECKS PAYABLE TO **ASHRAE Baltimore Chapter** NO TICKETS WILL BE ISSUED.

COMPANY: _____

CONTACT: _____

PHONE: _____ EMAIL ADDRESS: _____

NAMES OF FOURSOME: _____

(PLEASE INCLUDE
EMAIL ADDRESS AND PHONE) _____

NO. OF PLAYERS _____ @ \$135/EA

HOLE SPONSOR: YES _____ @ \$150/EA

TOTAL FOR PLAYERS: _____

TOTAL FOR HOLE SPONSOR: _____

TOTAL AMOUNT OF CHECK: _____

PLEASE NOTE THAT ALL CORPORATE LOGOS FOR HOLE SPONSORSHIPS MUST BE SUBMITTED
ELECTRONICALLY

EMAIL R.L. GLADDEN AT GOLF@ASHRAE-BALTO.ORG OR FAX TO R.L.'S ATTENTION: 443-561-1601



A.S.H.R.A.E BALTIMORE CHAPTER

2011 *FIRST ANNUAL ROCKFISH TOURNAMENT RESULTS*

Thank you to all who participated in the fishing tournament! The fishing turned out to be a little tougher than anticipated due to the weather. The wind blew hard all day, causing rough waters out on the bay. Although the fishing was tough, every boat managed to catch some keeper rockfish. The winning boat, with five rockfish, was THE MISS GRACE, earning everyone on the boat a \$50 gift card to Bass Pro Shops. The winning fish, measuring in at 24" also came off of that boat, earning Craig Parks a \$150 gift card to Bass pro Shops. Afterwards, the participants enjoyed a buffet lunch at the marina restaurant. Thanks again to everyone for their support of Research and Promotion and for helping make this event a success.



Congratulations to the participants on THE MISS GRACE:

*Craig Parks
Danny Schatz
Ray Adkins
Dave Woodward
Max Singer
Alex Clark*

Congratulations to Craig Parks for catching the winning fish and winning the grand prize gift card!!



THANK YOU TO OUR SPONSORS!

Whole Boat Sponsors:

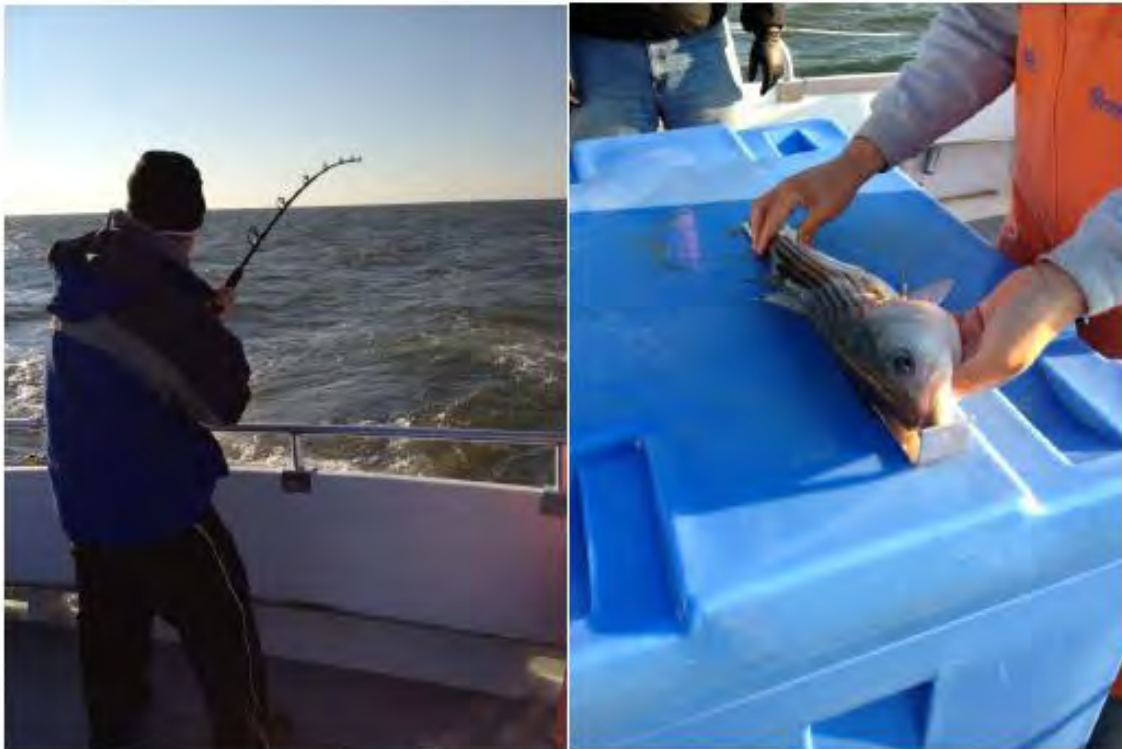
**Cummins-Wagner
Havtech
Siemens**

Cooler and Breakfast Sponsor:

A Squared Plus Engineering Support Group, LLC

Lunch Sponsor:

**Havtech
Spears/Votta & Associates
N. H. Yates**



Hopefully we can make this event an annual traditions. Look for information for next's year fishing tournament in subsequent Thermograms



THANKS TO OUR 2011 RP DONORS FOR THEIR SUPPORT!!!!

The 2011-2012 Research Promotion Campaign is in full swing and runs from July 1, 2011 to June 29, 2012.

Ways to contribute:

Online at WWW.ASHRAE.ORG. On the right side go to Quick Links, click on online contribution. Fill in all the required information. Please remember to put **BALTIMORE CHAPTER** in the Assigned Ashrae Chapter area so **your chapter** can receive credit.

OR

Make your checks out to **ASHRAE RESEARCH FUND**. Please remember to add **BALTIMORE CHAPTER** to the memo line. Send to 1791 Tullie Circle NE, Atlanta Georgia 30329-2305.

OR

Contact me. Phone: 410-254-5800

Email: research@ashrae-balto.org

Baltimore Chapter Research Promotion Campaign night is scheduled for April 5th. We will be accepting donations.

Anyone interested in becoming part of the Research Committee, contact Alex Clark (410-254-5800) or Sherry Abbott-Adkins (443-977-9741)

Sincerely your Research Promotion Chair,

Alex Clark



2011-12 MONTHLY PLEDGE REPLY FORM

Response Requested by 12/01/2011

ATTENTION: Candace DeVaughn
CDevaughn@ashrae.org
404-636-8400 x1147
678-539-2147 (fax)

SUBJECT: Monthly RP Donation

For about 30¢ a day, you can become an Honor Roll Level RP donor!

I authorize ASHRAE RP to charge my credit card through June, 2012:

- Monthly \$_____ per month
- Bi-Monthly \$_____ per month

This should be credited as a(n):

- Individual Donation Company Donation

FROM: Name _____

Member/ Donor Number _____

Company _____

Address _____

City/State/Zip _____

Phone _____

Email _____

Credit Card # _____ Exp. Date _____

____ American Express ____ MasterCard ____ Visa

Signature _____

HONOR ROLL INVESTOR CATEGORIES

- \$1,000 - \$2,499: Major Investor
- \$500 - \$999: Major Donor
- \$250 - \$499: Honor Roll Investor
- \$100 - \$249: Honor Roll Donor

ASHRAE, Inc. is a qualified 501(c)(3) organization.
100% of every dollar contributed is invested in HVAC&R research.



ASHRAE Research Donors '11-'12

\$1,000

Tithe Corp. – Skil-Aire Div.



\$31,300

\$500 TO \$999

Baumgartner Inc.

\$250 TO \$499

Gipe Associates, Inc.

Leach Wallace Associates, Inc.

\$100 TO \$249

Rich Goins

Cory Colassard

Michael Lamdin

Alex Clark

Michael Sichel

Charlie Henck

Dave Lawson

David Reese

State Mechanical Contractors, Inc.

Maryland Mechanical Systems, Inc.

Danfoss

John Schenck

\$10 TO \$99

Theresa Schroeder

Michael Dean

Steven Emmerich

Lauren Baker

Laurence Claggett, Jr.





Scholarship Application

The Baltimore Chapter of the American Society of Heating, Refrigeration and Air Conditioning Engineers offers scholarships each year to students pursuing their Bachelor’s Degree in an ASHRAE related field. Eligibility is determined in order of importance based on the following criteria:

- ASHRAE field of training.
- Accredited course in recognized college (or program pre-approved by ASHRAE Board)
- Matriculating for a degree in an ASHRAE related engineering field
- Residing in, or moving to the Baltimore Chapter assigned area (Permanent resident)
- Working in the Heating, Ventilating, Air Conditioning, and Refrigeration (HVACR) field.
- Son or daughter of a Baltimore chapter member, living or deceased.*
- High Scholastic standing or average from previous year.
- Financial need.
- A veteran with an Honorable Discharge or member of United States Armed Services.

*Note: If you are acquainted with an existing Baltimore Chapter Member, please note this as well.

Applications are reviewed by the Baltimore Chapter of ASHRAE Scholarship Committee anonymously. Scholarship funds are made available to students directly during the first quarter of the calendar year.

Instructions:

Please return completed application and a **current transcript** by December 31, 2011 to:

ASHRAE Scholarship Committee
 c/o John J. Baker
 Johnson Controls, Inc.
 60 Loveton Circle
 Sparks, MD 21152
 Email: john.j.baker@jci.com
 Fax: 410-527-2730

Name: _____

Permanent Mailing Address: _____

Phone #: _____ Email: _____



What is your major? _____

Are you Matriculated in a 4 year (Bachelor's) Degree Program at an accredited institution? _____. School: _____

What is your cumulative GPA in all courses taken through the end of the Spring, 2011 semester? _____.

What is your GPA in all engineering courses taken through the end of Spring, 2011 semester? _____.

List the courses that you are taking this semester (Fall 2011) and the instructors:

Course #	Course Title	Instructor
_____	_____	_____
_____	_____	_____
_____	_____	_____
_____	_____	_____
_____	_____	_____

Are you related to an ASHRAE Baltimore Chapter member (Living or deceased)?
_____ Yes _____ No (Please DO NOT name chapter member at this time).

Are you a veteran (with an Honorable Discharge) or currently serving in the United States Armed Services?
_____ Yes _____ No

Are you a member of any professional societies or clubs (either regional chapter or student chapter)? If so, list them below. Include offices held, committees on which you have served, activities in which you participated, etc. (Attach additional sheets if needed.)



TO: BALTIMORE CHAPTER, ASHRAE
EMAIL: jcote@chesapeake.sys.com
FAX: (443) 561-1604



YES! I will attend the Future Trends in Buildings Meeting Thursday January 5th.

Reservations: We are encouraging members to make reservations via e-mail. Those planning to attend should write to jcote@chesapeake.sys.com indicating name(s) and membership status. (member or guest) Please be sure to also include "ASHRAE Meeting" in the subject matter line. If you wish to continue utilizing technology from the previous century, you can always fax this page to: Chesapeake Systems, attn: James Cote - Reservations at 443-561-1604, or call James at 443-561-1600

Deadline for reservations and cancellations: Monday, January 3rd - NOON. Reservations made after the deadline will be placed on a waiting list. Late cancellations and "no-shows" will be billed to the appropriate individuals.

Cost: \$25.00 per person for members and guests \$10.00 for students for the main meeting.

Cash or Check made payable to Baltimore Chapter ASHRAE. ASHRAE CANNOT INVOICE FOR MEETINGS OR SEMINARS. This FAX will confirm my reservation for the dinner meeting and main program.

This FAX will confirm the following members/guests indicated below:

Circle one:

- | | | |
|----------|--------|-------|
| 1. _____ | Member | Guest |
| 2. _____ | Member | Guest |
| 3. _____ | Member | Guest |
| 4. _____ | Member | Guest |
| 5. _____ | Member | Guest |
| 6. _____ | Member | Guest |
| 7. _____ | Member | Guest |
| 8. _____ | Member | Guest |